



# 2019-20 DELAWARE

## WOMEN'S BASKETBALL

Maggie Hayon, Assistant Athletics Communications Director | O: 302-831-6389 | C: 920-912-6635 | mhayon@udel.edu  
University of Delaware | Bob Carpenter Center | 631 S. College Ave. | Newark, DE 19716

### SCHEDULE/RESULTS

N8	Maine	L	69-56
N12	<b>Delaware State</b>		<b>7 p.m.</b>
N17	at Maryland		1 p.m.
N24	at UCF		2 p.m.
N29	at Cal State Fullerton *		9 p.m.
N30	vs. Santa Clara *		5:30 p.m.
D4	<b>George Washington</b>		<b>7 p.m.</b>
D7	at Robert Morris		Noon
D15	at Gardner-Webb		3 p.m.
D17	at Charlotte		11:30 a.m.
D29	<b>George Mason</b>		<b>1 p.m.</b>
J3	at UNCW *		7 p.m.
J5	at College of Charleston *		1 p.m.
J10	<b>Hofstra *</b>		<b>7 p.m.</b>
J12	<b>Northeastern *</b>		<b>1 p.m.</b>
J19	at Drexel * TV		2 p.m.
J24	at William & Mary *		7 p.m.
J26	at Elon *		2 p.m.
J31	<b>James Madison *</b>		<b>7 p.m.</b>
F2	<b>Towson * TV</b>		<b>1 p.m.</b>
F7	at Northeastern *		7 p.m.
F9	at Hofstra *		2 p.m.
F16	<b>Drexel * TV</b>		<b>1 p.m.</b>
F21	<b>Elon *</b>		<b>11 a.m.</b>
F23	<b>William &amp; Mary *</b>		<b>1 p.m.</b>
F28	at Towson *		7 p.m.
M1	at James Madison *		2 p.m.
M5	<b>College of Charleston *</b>		<b>7 p.m.</b>
M7	<b>UNCW * TV</b>		<b>1 p.m.</b>

#### CAA Tournament at Elon

M11	CAA First Round		
M12	CAA Quarterfinals		
M13	CAA Semifinals		
M14	CAA Finals		

# - Cal State Fullerton Tournament | \* CAA Game

All times Eastern | Times/dates subject to change

TV = NBC Sports Phila., NBC Sports Wash., SportsNet New York (SNY)

TV+ = NBC Sports Philadelphia +

Home games bolded and played at the Bob Carpenter Center

### #BLUEHENS ONLINE

Website	BlueHens.com
Facebook	facebook.com/DelawareBlueHens
	facebook.com/DelawareWomensBasketball
Instagram	UDBlueHens
	DelawareWBB
Twitter	@DelawareWBB
	@CoachAdair
YouTube	youtube.com/UDBlueHens

### GAMEDAY CENTRAL

GAME TWO | University of Delaware vs. Delaware State University



Delaware (0-1 | 0-0 CAA)

**BLUE HENS**

Date ..... Tuesday, November 12, 2019

Time ..... 7 p.m. Eastern

Location ..... Bob Carpenter Center

..... Newark, Del.

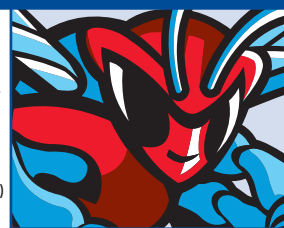
Radio ..... Fox Sports 1290/1410 WDOV

Matt Janus (pxp), Christine Motta (color)

Stream ..... FloSports.tv/CAA

Live Stats ..... BlueHenStats.com

Twitter ..... @DelawareWBB



Delaware State (1-1 | 0-0 MEAC)

**HORNETS**

#### THE GAME

» Tuesday's game is the second of two to start the year at home for Delaware while the game is the lone road contest for Delaware State in the first nine games of the season.

» The Blue Hens are playing their last home game until December 4.

» The 2019-20 Delaware athletics season will be a yearlong celebration of the 50<sup>th</sup> anniversary of women's athletics at the University of Delaware.

#### THE SERIES

» Delaware is 11-0 all-time against Delaware State, including a 6-0 mark in contests played at home.

» The two teams first matched up on December 10, 1992 as the Blue Hens topped the Hornets, 81-56 on the road.

» Last season, UD posted the 85-77 win over DSU at Memorial Hall on November 20.

» Delaware averages 74.6 points per game against the Hornets while allowing DSU to 54.7 points per.

#### THE COACHES

» **Natasha Adair** (South Florida '94) is in her third season at UD after being named just the fourth women's basketball coach in the program's illustrious history on May 14, 2017.

» Now in her eighth season overall, Adair recorded her 100<sup>th</sup> career victory as a head coach during the 2018-19 campaign.

» **David Caputo** (Montclair State '05) is in his second season as the head coach at Delaware State. Caputo is a familiar face as he previously served as an assistant coach at CAA foe UNCW during the 2017-18 season.

#### STAT COMPARISON

	UD	DSU
Record	0-1	1-1
PPG	56.0	52.5
Opp PPG	69.0	54.5
Margin	-13.0	-2.0
FG %	.368	.322
Opp FG %	.458	.322
3pt %	.375	.270
Opp 3pt %	.313	.222
FT %	.667	.543
Opp FT %	.870	.658
RPG	37.0	39.0
Opp RPG	31.0	45.5
Margin	+6.0	-6.5
APG	6.0	8.5
TOPG	18.0	14.0
A/TO	0.3	0.6
SPG	7.0	6.5
BPG	1.0	2.5
FPG	20.0	17.5

### PROJECTED DELAWARE STARTERS

Pos.	No.	Name	Ht.	Yr.	PPG	RPG	APG	SPG	BPG	MPG
G	2	Abby Gonzales	5-7	Sr.	5.0	6.0	1.0	1.0	--	35.0
G	30	Kayla Shaw	5-10	r-Jr.	11.0	1.0	--	--	--	29.0
G	20	Jasmine Dickey	5-10	So.	16.0	13.0	2.0	4.0	--	32.0
F	22	Samone DeFreese	6-0	Sr.	4.0	1.0	2.0	--	--	15.0
F	25	Rebecca Lawrence	6-3	Sr.	5.0	4.0	--	--	1.0	21.0

**@DELAWAREWBB**

## QUICK FACTS

Location.....Newark, Del. 19716  
 Founded.....1743  
 Enrollment .....19,060 Undergraduate  
 Nickname .....Blue Hens  
 Official Mascot .....YoUDee  
 Colors.....Blue (PMS 2945c) & Yellow (PMS 109c)  
 Affiliation.....NCAA Division I  
 Conference.....Colonial Athletic Association (CAA)  
 Home Facility .....Bob Carpenter Center | 5,000

## ADMINISTRATION

President .....Dennis Assanis  
 NCAA Faculty Delegate.....Tammy Anderson  
 Director of Athletics.....Chrissi Rawak  
 Sport Administrator/SWA .....Jen Vining-Smith

## 2018-19 SEASON IN REVIEW

Overall Record.....16-15  
 CAA Record | Finish .....11-7 | Fifth  
 Home | Away | Neutral .....8-6 | 6-7 | 2-2  
 Postseason Play.....0-1  
*Fell to Towson, 59-49, in CAA Quarterfinals*

## 2019-20 SEASON PREVIEW

Starters Returning/Lost .....4/1\*  
 Letterwinners Returning/Lost .....10/3  
 Newcomers/Redshirts .....5  
 Top Returnees ..... Nicole Enabosi, Samone DeFreese,  
 Jasmine Dickey, Abby Gonzales  
 Key losses .....Bailey Kargo\*, Makeda Nicholas  
 Team Captains .....tba  
*\* Bailey Kargo out for season due to injury*

## PROGRAM HISTORY

First Year of Women's Basketball ..... 1971-72 (8-4)  
 All-Time Record .....778-522 (.598)  
 All-Time CAA Record ..... 215-107 (.668)  
 All-Time CAA Tournament Record .....25-17 (.595)  
 CAA Titles | Last .....2 | 2013  
 NCAA Championships .....n/a  
 NCAA Tournament Appearances | Last .....4 | 2013  
 All-Time NCAA Tournament Record.....3-4  
 WNIT Championships.....n/a  
 WNIT Postseason Appearances | Last .....8 | 2018  
 All-Time WNIT Postseason Record.....0-8

## 2019-20 DELAWARE BLUE HENS

No.	Name	Cl.	Pos.	Ht.	Hometown/Previous School
1	Lolo Davenport	r-Fr.	G/F	6-1	Plano, Texas/Plano
2	Abby Gonzales	Sr.	G	5-7	Wexford, Pa./North Allegheny
3	Brynn Wade	Fr.	F	6-1	Gilbert, Ariz./Gilbert
4	Paris McBride	So.	G	5-4	Woodbridge, Va./Woodbridge
5	Agnes Paul	Fr.	F	6-1	Bowie, Md./New Hope Academy
10	Tee Johnson	Jr.	G	5-5	Ocala, Fla./West Port (Tallahassee CC/Florida)
12	Lizzie Oleary	Jr.	F	6-2	Abington, Pa./Abington Senior
20	Jasmine Dickey	So.	G/F	5-10	Baltimore, Md./Catonsville
21	Chyna Latimer ^	Jr.	G/F	6-0	Edgewood, Md./Patterson Mill (George Washington)
22	Samone DeFreese	Sr.	F	6-0	Bergenfield, N.J./Berkshire (Mass.)
23	Bailey Kargo *	Sr.	G	5-10	Greensboro, N.C./Walter Hines Page
25	Rebecca Lawrence	Sr.	F	6-3	Ridgefield, Conn./Ridgefield
30	Kayla Shaw	r-Jr.	G	5-10	Scottsdale, Ariz./Chaparral (Monmouth)
32	Ty Battle ^	Jr.	F	6-0	Plainfield, Ill./Oswego East (Indiana State)
33	Nicole Enabosi	Gr.	F	6-0	Gaithersburg, Md./Our Lady of Good Counsel

© = Captains    ^ = Will sit out 2019-20 campaign due to NCAA transfer regulations    \* = Will miss season due to injury

## COACHING STAFF

Head Coach: Natasha Adair | South Florida '94 |  
 Third Season at Delaware (35-29 | .547) | Eighth Season Overall (107-114 | .484)  
 Associate Head Coach: Bob Clark | Towson '84 | Third Season  
 Assistant Coach: Sarah Jenkins (Recruiting Coordinator) | Georgetown '05 | Second Season  
 Assistant Coach: Mykala Walker | Wake Forest '13 | Second Season  
 Director of Operations: Adrienne Eisenhower | Kansas State '16 | First Season  
 Assistant Director of Operations: Kiké Rafiu | Georgetown '16 | First Season

## SUPPORT STAFF

Team Athletic Trainer: Melanee Johnson | Howard '03 | Fourth Season  
 Senior Student Athletic Trainer: Erin Finley  
 Strength & Conditioning Coach: Rich Levy | Springfield | First Season  
 Communications: Maggie Hayon | Marquette '08 | Eighth Season | mhayon@udel.edu

## PRONUNCIATIONS

12 | Lizzie Oleary | oh-leer-ee      HC | Natasha Adair | aye-dare  
 22 | Samone DeFreese | suh-mone      AC | Mykala Walker | mic-kay-luh  
 33 | Nicole Enabosi | en-uh-bo-cee      ADOBO | Kiké Rafiu | key-kay

## CATEGORY LEADERS

Points.....	16.....	Jasmine Dickey
Rebounds.....	13.....	Jasmine Dickey
Assists.....	2.....	DeFreese, Dickey
Steals.....	4.....	Jasmine Dickey
Blocks.....	1.....	Rebecca Lawrence
3-pointers.....	2.....	Kayla Shaw
FG % (at least 10 Att.).....	.500.....	Kayla Shaw
3pt % (at least 5 Att.).....	.200.....	Abby Gonzales
FT % (at least 10 Att.).....		
Minutes.....	35.....	Abby Gonzales

## LAST TIME OUT

**Jasmine Dickey** picked up where she left off with a double-double in the season opener for Delaware, but a strong second half by reigning America East champion Maine proved too much as the Blue Hens fell 69-56 on Friday afternoon. The Black Bears, who won 25 games and went to the NCAA Tournament last season, shot 13-of-24 from the field in the second and third quarters combined to pull away from Delaware. Dickey poured in a team-high 16 points and 13 rebounds for her sixth career double-double, while **Kayla Shaw** finished with 11 points in her Blue Hen debut. Delaware used long-range shooting to ignite a fast start with three three-pointers by **Abby Gonzales**, **Samone DeFreese** and Shaw to grab an early 11-3 advantage. Seven different players scored in the first quarter for the Blue Hens, who took an 18-14 lead into the second quarter. Maine would score nine straight in the middle of the second to take a 36-30 advantage into the break. The Black Bears would extend their lead in the third before the Blue Hens put together a rally, getting the deficit down to single digits with under four minutes to play on an old-fashioned three-point play by Shaw. The Black Bears would hit free throws down the stretch to finish off the 69-56 victory.

## LAST TIME AT DELAWARE STATE | TUESDAY, NOVEMBER 20, 2018 | MEMORIAL HALL

The Blue Hens received double-figure scoring efforts from four different players, including career nights from **Abby Gonzales** and **Gadson Lefft**, as Delaware picked up the 85-77 victory at Delaware State's Memorial Hall. Gonzales, who registered 20 points in the previous game upped her career-high with 21 points versus the Hornets. The junior guard posted a career-best five 3-pointers to go along with eight assists. The biggest spark of the night may have been provided by Lefft however as the redshirt senior scored her first career points in a Blue Hens uniform and finished the night with 15 points on 6-of-7 shooting from the field and a mark of 3-for-3 from the charity stripe. Lefft added a career-high six rebounds, two assists and two steals in 16 minutes of action. A back-and-forth affair throughout the first half, Delaware State (1-3) took the lead into the halftime break. Nine straight points from Lefft in the third turned the tides as Delaware (2-2) took the lead and never looked back in the win. **Bailey Kargo** collected a season-best 15 points while **Makeda Nicholas** logged 12 points, three steals and two blocked shots.

## LAST TIME VS. DSU AT HOME | SUNDAY, DECEMBER 10, 2018 | BOB CARPENTER CENTER

The scoring came early and often for the Blue Hens as Delaware cruised to the 84-49 victory over in-state foe Delaware State. The Hens (6-4), who led by as much as 45 in the fourth quarter, saw double figure scoring from three different players, including the eighth double double of the season for **Nicole Enabosi**. Enabosi finished the game with 17 points and 11 rebounds while **Samone DeFreese** registered 19 points and nine rebounds. **Lizzie Oleary** added a then-season-high 10 points in the win. The Blue Hens outrebounded Delaware State, 47-33, and committed a season-low eight turnovers to DSU's 19.

DELAWARE KICKS OFF 49<sup>TH</sup> SEASON OF WOMEN'S BASKETBALL

The 2019-20 season marks the 49<sup>th</sup> overall in the history of the University of Delaware women's basketball.

## DELAWARE EXTREMES

Largest lead.....	8 vs. Maine, 11/8	FG Percentage.....	.368 (21-57) vs. Maine, 11/8
Largest deficit.....	16 vs. Maine, 11/8	3-pt FG Made.....	6 vs. Maine, 11/8
Largest half lead.....		3-pt FG Att.....	16 vs. Maine, 11/8
Largest half deficit.....	6 vs. Maine, 11/8	3-pt FG Percentage.....	.375 (6-16) vs. Maine, 11/8
Largest lead in loss.....	8 vs. Maine, 11/8	Free Throws Made.....	8 vs. Maine, 11/8
Largest deficit in win.....		Free Throw Attempts.....	12 vs. Maine, 11/8
Largest half lead in loss.....		FT Percentage.....	.667 (8-12) vs. Maine, 11/8
Largest half deficit in win.....		Rebounds.....	37 vs. Maine, 11/8
Largest lead at home.....	8 vs. Maine, 11/8	Assists.....	6 vs. Maine, 11/8
Largest deficit at home.....	16 vs. Maine, 11/8	Steals.....	7 vs. Maine, 11/8
Largest lead on road.....		Blocks.....	1 vs. Maine, 11/8
Largest deficit on road.....		TO (Most).....	18 vs. Maine, 11/8
Most Points.....	56 vs. Maine, 11/8	TO (Fewest).....	18 vs. Maine, 11/8
Field Goals Made.....	21 vs. Maine, 11/8	Fouls.....	20 vs. Maine, 11/8
Field Goal Attempts.....	57 vs. Maine, 11/8		

## TRENDS

	Overall	Home	Rd/Ntl
Overall Record .....	0-1	0-1	
Conference Record.....			

## SCORING

Leading at half.....		
Trailing at half.....	0-1	0-1
Tied at half.....		
Scoring first.....	0-1	0-1
Games decided by five points or less.....		
Games decided by 6-10 points.....		
Leading with 2:00 left.....		
Overtime games.....		
Double Overtime games.....		

## OFFENSE

UD scores 80+ points.....		
UD scores 70-79 points.....		
UD scores 60-69 points.....		
UD scores <60 points.....	0-1	0-1
Shooting 45% or better.....		
Shooting less than 45%.....	0-1	0-1
FT % over .700.....		
Player scoring 30+ points.....		
Player scoring 20+ points.....		
Two-plus players in double digits.....	0-1	0-1

## DEFENSE

OPP scores 80+ points.....		
OPP scores 70-79 points.....		
OPP scores 60-69 points.....	0-1	0-1
OPP scores <60 points.....		
More steals than OPP.....		
Less steals than OPP.....	0-1	0-1
Even steals.....		

## REBOUNDING/TURNOVERS

More rebounds than OPP.....	0-1	0-1
Less rebounds than OPP.....		
Even rebounding.....		
More TO than OPP.....	0-1	0-1
Less TO than OPP.....		
Even TO.....		

## MONTHS

November.....	0-1	0-1
December.....		
January.....		
February.....		
March.....		

## DAYS

Sunday.....		
Monday.....		
Tuesday.....		
Wednesday.....		
Thursday.....		
Friday.....	0-1	0-1
Saturday.....		

## TIME

Day.....	0-1	0-1
Night (after 5 p.m. local time).....		

## UNIFORM

Blue.....		
White.....	0-1	0-1
Pink.....		

## MISCELLANEOUS

UD controls tip.....	0-1	0-1
Following a UD win.....		
Following a UD loss.....		

## THE LAST TIME UD...

### SCORING

Scored 100+ points:	.....2/27/81 vs. Temple (W, 101-96 ot)
Allowed 100+ points:	.....2/13/97 at Maine (L, 54-102)
Held under 40 points:	.....3/12/09 vs. Towson (L, 37-40)
Held opponent under 40 points:	.....12/28/18 vs. Saint Joseph's (W, 48-39)
Held opponent under 30 points:	.....1/10/13 vs. George Mason (W, 62-27)
Made 6+ 3-pointers:	.....11/8/19 vs. Maine (6-16)
Made 0 3-pointers:	.....2/5/19 at Drexel (0-8)
Allowed 6+ 3-pointers:	.....3/9/19 at James Madison (6-22)
Shot .500 FG%:	.....2/24/19 at UNCW (.500; 26-52)
	.....3/3/17 at Towson (.517; 30-58)
Allowed .500 FG%:	.....2/4/18 at Northeastern (.540)
Had 5 Players w/10+ Pts:	.....2/28/16 at UNCW (5)

### REBOUNDING

Grabbed 60 rebounds:	.....2/17/19, 60 vs. Hofstra
	.....11/14/14, 60 at Lafayette
Grabbed 50 rebounds:	.....2/16/19, 52 vs. Northeastern
	.....1/6/19, 54 vs. Towson
	.....11/17/18, 50 vs. Nicholls
Opponent grabbed 60 rebounds:	.....1/8/17, 62 by Elon
Opponent grabbed 50 rebounds:	.....3/14/19, 51 by Towson

### OVERTIME GAMES

OT Game Played:	.....3/9/18 at Drexel (L, 58-53)
2OT Game Played:	.....11/25/17 vs. Saint Peter's (L, 90-87)

### MISCELLANEOUS

Won after trailing at half:	.....3/3/19 vs. William & Mary (22-26 -- W, 68-52)
Lost after leading at half:	.....3/9/19 at James Madison (22-20 -- L, 56-51)

## THE LAST TIME A UD PLAYER...

### SCORING

Scored 25-29 points:	.....1/25/19, Samone DeFreese (26 vs. UNCW)
Opponent scored 25-29 points:	.....11/16/18, Claire Lundberg (28, Montana State)
Scored 30-39 points:	.....2/15/19, Samone DeFreese (31 vs. Northeastern)
	.....12/7/15, Hannah Jardine (31 at George Mason)
Opponent scored 30-39 points:	.....11/8/19, Blanca Millan (37, Maine)
Scored 40-49 points:	.....2/26/12, Elena Delle Donne (42 at Hofstra)
Opponent 40-49 points:	.....2/26/15, Brie Mobley (46, UNCW)

### REBOUNDING

Grabbed 10 rebounds:	.....11/8/19, Jasmine Dickey (13 vs. Maine)
Opponent grabbed 10 rebounds:	.....3/14/19, Kionna Jeter (10, Towson)
Grabbed 15 rebounds:	.....11/23/18, Jasmine Dickey (18 vs. Bradley)
Opponent grabbed 15 rebounds:	.....3/7/19, Maia Lee (17, Towson)
Grabbed 20 rebounds:	.....12/22/17, Nicole Enabosi (20 vs. Loyola)

### MISCELLANEOUS

Had 5 blocked shots:	.....12/18/18, Rebecca Lawrence (5 vs. Gardner-Webb)
Had 10 assists:	.....11/19/17, Abby Gonzales (10 vs. Boston University)
Had a double-double:	.....11/8/19, Jasmine Dickey (16/13 vs. Maine)
Opponent had a double-double:	.....3/14/19, Kionna Jeter (30/10, Towson)

en's basketball program. During their previous 48 years, the Blue Hens have registered a mark of 778-521 (.599) with 32 winning seasons under four head coaches.

### HOME SWEET HOME

Since starting play at the Bob Carpenter Center in 1992, Delaware is 245-110 (.690) overall.

### UD SLATED TO FINISH FOURTH IN CAA; DEFREESE AND ENABOSI EARN PRESEASON HONORS

The Blue Hens were predicted to finish fourth in the CAA Preseason Poll. Additionally, **Nicole Enabosi** and **Samone DeFreese** were picked as Preseason All-CAA honorees. Under third-year head coach **Natasha Adair**, the Blue Hens look to improve upon a 16-15 record from a season ago. UD returns four starters and seven letter winners from last season in addition to seeing Enabosi back on the court following ACL surgery that kept her out last year. The 2018 CAA Player of the Year, Enabosi earned Preseason First Team accolades. She finished her junior campaign ranked in the Top 10 of nine Delaware single-season categories while leading the CAA in points per game (18.0), rebounds per game (11.8) and defensive rebounds per game (8.9). A starter for the past two seasons, DeFreese was tabbed a Preseason Second Team selection. A CAA All-Second Team honoree last season, the forward the Blue Hens with 10.9 points per game and a 73.3 (77-for-105) free throw percentage.

### 50 YEARS OF DELAWARE WOMEN'S ATHLETICS

The 2019-20 Delaware athletics season will be a yearlong celebration of the 50<sup>th</sup> anniversary of women's athletics at the University of Delaware. Different events and digital content will showcase the incredible accomplishments of Blue Hen women in the last half-century. Additionally, all women's teams will sport unique patches on their jerseys this season. Please visit [BlueHens.com/Womens50th](http://BlueHens.com/Womens50th) for more information.

### FRESH FACES

Delaware added five new players to its lineup for 2019-20 as the Blue Hens welcome freshmen **Agnes Paul** and **Brynn Wade** and transfer student-athletes **Ty Battle**, **Tee Johnson** and **Chyna Latimer**.

### ADAIR LEADS USA TO GOLD

In her third USA Basketball coaching experience, Delaware head coach **Natasha Adair** helped guide the Team USA U19 squad to a gold medal at the 2019 FIBA Women's World Cup in Thailand. Adair coached alongside Louisville head coach, Jeff Walz, and UCLA head coach, Cori Close. The trio led the 2018 USA Women's U18 National Team to a gold medal, earning the team a berth in the 2019 FIBA U19 World Cup.

### BLUE HENS WITHOUT KARGO IN 2019-20

The Blue Hens were dealt a blow to the roster during the offseason as **Bailey Kargo**, one of the team's sharp-shooting leaders underwent surgery for an ACL injury.

### ELENA DELLE DONNE '13 LEADS MYSTICS TO WNBA TITLE; NAMED WNBA MVP

It was a successful year for Blue Hens alumna **Elena Delle Donne** as she led the Washington Mystics to its first-ever WNBA title while becoming the first player in WNBA history to earn Most Valuable Player honors with two different teams (Chicago Sky, 2015).

# CAA/NCAA RANKINGS

Category	CAA	NCAA
Scoring Offense.....	56.0.....8.....	280
Scoring Defense.....	69.0.....6.....	221
Scoring Margin.....	-13.0.....8.....	268
FT %.....	.667.....4.....	178
FG %.....	.368.....7.....	230
FG % Def.....	.458.....9.....	288
3FG/Game.....	6.0.....6.....	156
3FG %.....	.375.....4.....	72
3FG % Def.....	.313.....7.....	192
Rebounds.....	37.0.....7.....	215
Rebounds (Opp).....	31.0.....2.....	
Rebounding Margin.....	+6.0.....3.....	116
Blocks.....	1.0.....9.....	298
Assists.....	6.0.....9.....	324
Steals.....	7.0.....8.....	214
Turnover Margin.....	-4.00.....10.....	271
Assist/TO Ratio.....	0.3.....9.....	325
Win/Loss %.....	.000.....7.....	239

# RANKED UD PLAYERS

Category	CAA	NCAA
Scoring.....	16.0.....Jasmine Dickey.....10.....	229
.....	11.0.....Kayla Shaw.....16.....	
Rebounding.....	13.0.....Jasmine Dickey.....1.....	20
.....	6.0.....Abby Gonzales.....11.....	
FG%.....	.500.....Kayla Shaw.....8.....	
Assists.....		
FT%.....	1.000.....Jasmine Dickey.....1.....	
Steals.....	4.0.....Jasmine Dickey.....2.....	35
.....	2.0.....Tee Johnson.....9.....	
3FG%.....	1.000.....Rebecca Lawrence.....1.....	
.....	.500.....Samone DeFreese.....7.....	
3FG Made.....	2.0.....Kayla Shaw.....7.....	219
Blocks.....	1.0.....Rebecca Lawrence.....9.....	235
A/TO Ratio.....		
Off Reb.....	5.0.....Jasmine Dickey.....2.....	
.....	2.0.....Rebecca Lawrence.....15.....	
Def Reb.....	8.0.....Jasmine Dickey.....2.....	
.....	6.0.....Abby Gonzales.....3.....	
Minutes.....	35.0.....Abby Gonzales.....6.....	
Dbl Dbl.....	1.0.....Jasmine Dickey.....16.....	

To be ranked, player must appear in at least 75% of their team's games

# NOTABLES

DOUBLE DOUBLES	SEASON	CAREER	20-PT. GAMES	SEASON	CAREER
Samone DeFreese		9	Samone DeFreese		4
Jasmine Dickey	1	6	Jasmine Dickey		1
Nicole Enabosi		44	Nicole Enabosi		17
Rebecca Lawrence		1	Abby Gonzales		2
			Bailey Kargo		2
DOUBLE-FIGURE PTS.	SEASON	CAREER	30-PT. GAMES	SEASON	CAREER
Samone DeFreese		33	Samone DeFreese		1
Jasmine Dickey	1	7			
Nicole Enabosi		64			
Abby Gonzales		21			
Bailey Kargo		18			
Rebecca Lawrence		8			
Paris McBride		3			
Lizzie Oleary		4			
Kayla Shaw	1	1			
DOUBLE-FIGURE REB.	SEASON	CAREER	DOUBLE-FIGURE REB.	SEASON	CAREER
Samone DeFreese		10	Samone DeFreese		10
Jasmine Dickey		9	Jasmine Dickey		9
Nicole Enabosi		47	Nicole Enabosi		47
Rebecca Lawrence		3	Rebecca Lawrence		3
Lizzie Oleary		1	Lizzie Oleary		1
20-REB. GAMES	SEASON	CAREER	20-REB. GAMES	SEASON	CAREER
Nicole Enabosi		1	Nicole Enabosi		1

# DELAWARE STREAKIN'

Current Streak: L3 (dating to 2018-19)
Longest Win Streak:
Longest Losing Streak: L1
Current Home Streak: L2 (dating to 2018-19)
Longest Home Win Streak:
Longest Home Losing Streak:
Current Road/Neutral Streak: L1 (dating to 2018-19)
Longest Road/Neutral Win Streak:
Longest Road/Neutral Losing Streak:



HEAD COACH NATASHA ADAIR



35-29 (.547)  
First Season at Delaware  
107-114 (.484)  
Seventh Season Overall  
South Florida '94



PLAYING CAREER

1990-92.....Pensacola Junior College.....Two state championships  
.....Led team in rebounding  
1992-94.....University of South Florida.....Single-season rebounding record

COACHING CAREER

1998-04.....Georgetown University.....Assistant Coach  
.....Averaged 15 wins per season  
.....Four WNIT appearances  
2004-07.....Wake Forest University.....Assistant Coach  
.....Averaged 13 wins per season  
.....One WNIT appearance  
2007-12.....Wake Forest University.....Associate Head Coach  
.....Averaged 17 wins per season  
.....Three WNIT appearances

HEAD COACHING TENURE

YEAR	RECORD	CONFERENCE	HIGHLIGHTS
College of Charleston			
2012-13.....	16-16.....	11-9 (SoCon).....	Postseason WBI (1-1)
2013-14.....	19-15.....	9-7 (CAA).....	Postseason WBI (2-1)
CofC TOTAL. 35-31.....20-16.....Two WBI appearances			
Georgetown University			
2014-15.....	4-27.....	2-16 (BIG EAST)...	
2015-16.....	16-14.....	9-9.....	Postseason WNIT (0-1)
2016-17.....	17-13.....	9-9.....	Postseason WNIT (0-1)
GU TOTAL..... 37-54.....20-34.....Two WNIT appearances			
University of Delaware			
2017-18.....	19-14.....	11-7 (CAA).....	Postseason WNIT (0-1)
2018-19.....	16-15.....	11-7.....	
2019-20.....	0-1.....		
UD TOTAL 35-29 22-14 One WNIT appearance			
CAREER..... 107-114.....31-21 (CAA).....Five Postseason appearances			

Natasha Adair was selected as just the fourth women's basketball head coach in the program's illustrious history on May 14, 2017.

In her first season with the Blue Hens, Adair guided Delaware to its most wins (19) and first postseason appearance since the 2013-14 campaign. Additionally, the Hens captured 10 conference victories for the first time since 2012-13.

Under Adair, the Blue Hens were an offensive threat as Delaware averaged its most points (65.8) since 2012-13. Additionally, the Hens logged 80-plus points in six different contests for the first time in six seasons while logging five straight games of 70-plus points to open the year while UD only reached 70-plus points three times in each of the previous two seasons.

Delaware also saw the fifth player in program history pick up Conference Player of the Year accolades as forward Nicole Enabosi earned the Colonial Athletic Association's top individual award while also garnering CAA All-First Team and All-Defensive Team honors for the second straight season. Enabosi finished her junior year by overtaking the Blue Hens single-season records in rebounds (375) and double-doubles (23) while her name is littered among the Delaware single-season Top 10 for points, points per game, rebounds per game, blocked shots, field goals made, field goal percentage, free throws made and free throws attempted.

Adair, who has more than 20 years of coaching experience under her belt, has received the national attention of USA Basketball and has served as an assistant coach for the U19 and U18 Women's National Basketball Teams and has spoken at the USA Basketball Las Vegas Coach Academy. Additionally, Adair served as a U19 Women's World Cup Team Trials Court Coach during the summer of 2017.

Adair joined the Blue Hens from Georgetown University, where she turned around a four-win Hoya program to a postseason contender in three seasons as head coach. Behind Adair's leadership, GU finished 2016-17 with a 17-13 record, the most wins for the Hoyas since 2011-12, and garnered the team's second straight trip to the Postseason WNIT.

The Silver Spring, Md. native is no stranger to the Colonial Athletic Association as her first head coaching stint took her to the College of Charleston, where she was 35-31 overall. In the Cougars' first season in the CAA in 2013-14, Adair guided The College to record of 19-15, marking the third-highest win total in the school's Division I era. Additionally, the squad finished third in conference play, defeated five postseason teams from the previous year and advanced to the semifinals of both the CAA Championship and the Women's Basketball invitational.

Adair played collegiately at Pensacola Junior College (1990-92) before playing and graduating from the University of South Florida with a degree in communications in 1994. She previously spent 13 seasons in the assistant coaching ranks, with seven years (2004-12) at Wake Forest University and six seasons (1998-04) at Georgetown University. Her coaching career has seen her develop and mentor 12 players who went on to play at the professional level.



BOB CLARK  
Associate Head Coach



SARAH JENKINS  
Assistant Coach



MYKALA WALKER  
Assistant Coach



ADRIENNE EISENHAUER  
Director of Operations



KEKE RAFIU  
Asst. Director of Ops

#1 LOLO DAVENPORT

Redshirt Freshman | Guard/Forward | 6-1 | Sociology Education  
Plano, Texas | Plano Senior High | Proskills GEYBL



CAREER STATISTICS

- » Born October 19, 1999 in Dallas, Texas
- » Daughter of Bruce Davenport and Glenda Monette-Davenport
- » Has three siblings, Bruce Jr., Samuel and Mariah
- » Cousin, Alana Beard, was the 2017 and 2018 WNBA Defensive Player of the Year for the Los Angeles Sparks
- » Led Plano Senior High School to the first girls basketball state championship in school history as a senior (2018) for head coach Rodney Belcher
- » Named the 2018 UIL 6A State Tournament MVP; also earned UIL 6A All-State First Team honors
- » Helped guide the Wildcats to an overall record of 35-6 during senior campaign; team was ranked 11th nationally and second in Texas
- » Averaged 23 points, nine rebounds, four assists and one block per game as a senior
- » Missed the 2018-19 season with an ACL injury

**COACH ADAIR SAYS:**

- » Complete, versatile player
- » Ability to score and defend pretty much anywhere on the floor
- » High energy player
- » High IQ player
- » Has mindset of doing whatever it takes to win

SEASON/CAREER HIGHS

Season	Career
Points:	
FG:	
FGA:	
3FG:	
3FGA:	
FT:	
FTA:	
Reb.:	
Assists:	
Blocks:	
Steals:	
Min:	

#2 ABBY GONZALES

Senior | Guard | 5-7 | Early Childhood Education  
Wexford, Pa. | North Allegheny | WPA Bruins



CAREER STATISTICS

Season	gp-gs	min/avg	Total		3-Point		F-Throws		Rebounds				Scoring					
			fg-fga	pct	fg-fga	pct	ft-fa	pct	off	def	tot	avg	pf	fo	ast	to	blk	stl
2016-17	30-22	855/28.5	50-179	.279	29-96	.302	15-24	.625	11	51	62	2.1	42	0	60	58	6	20
2017-18	31-31	1008/32.5	97-276	.351	39-127	.307	34-47	.723	14	94	108	3.5	62	0	125	94	3	45
2018-19	31-31	998/32.2	88-282	.312	58-172	.337	30-38	.789	14	71	85	2.7	55	1	95	73	4	51
2019-20	1-1	35/35.0	2-7	.286	1-5	.200	0-0	.000	0	6	6	6.0	1	0	1	6	0	1
TOTAL	93-85	2896/31.1	237-744	.319	127-400	.318	79-109	.725	39	222	261	2.8	160	1	281	231	13	117

- » Born May 17, 1998; daughter of Paulette and Andrew Gonzales; has two siblings, Jeremy and Evie; father played football at Duquesne, while brother played for Pitt
- » Led North Allegheny to a mark of 94-16 over four seasons; 1,000 point scorer for the Tigers; 2015-16 Female Senior Athlete of the Year; Guided NAHS to three straight PIAA quarterfinals appearances, including a trip to the 2014 and 2016 semifinals; Four-time Class 4A All-Conference selection; three-time team captain for head coach Spencer Stefko
- » First player in 18 years to register at least 10 assists in a single game (Christine Koren '00 at Lafayette, 11/29/99)
- » Student-teacher at McVey Elementary (fourth grade; Spring 2019); also taught at Newark Charter (second grade; Fall 2018)
- » 2019 CAA Dean Ehlers Leadership and Sport Excellence Award Recipient
- » Ranks in the Top 15 of the Delaware career record books in 3-point field goals attempted (fifth, 400); 3-point field goals made (seventh, 127); assists (ninth, 281); 3-point field goal percentage (12th, .318)

**COACH ADAIR SAYS:**

- » Floor general; coach on the floor
- » Steady, fearless, tough
- » Veteran leader
- » Has range from 3, IQ and ability to play off the bounce

SEASON/CAREER HIGHS

Season	Career
Points:	21 at Delaware State, 11/20/18
FG:	7, 4x, last at Delaware State, 11/20/18
FGA:	26 vs. Saint Peter's, 11/25/17
3FG:	5 at Delaware State, 11/20
3FGA:	13 vs. Saint Peter's, 11/25/17
FT:	5, 2x, last vs. UCF, 12/9/18
FTA:	7 vs. UCF, 12/9/18
Reb.:	7 vs. American, 11/16/17
Assists:	10 vs. Boston Univ., 11/19/17
Blocks:	1, 13x, last vs. Towson, 3/14/19
Steals:	6 vs. William & Mary, 3/3/19
Min:	45 vs. Saint Peter's, 11/25/17

#3 BRYNN WADE

Freshman | Forward | 6-1 | Entrepreneurship  
Gilbert, Ariz. | Gilbert | Arizona Select



CAREER STATISTICS

Season	gp-gs	min/avg	Total		3-Point		F-Throws		Rebounds				Scoring					
			fg-fga	pct	fg-fga	pct	ft-fa	pct	off	def	tot	avg	pf	fo	ast	to	blk	stl
2019-20	1-0	3/3.0	0-0	.000	0-0	.000	0-0	.000	0	0	0	0.0	0	0	0	1	0	0
TOTAL	1-0	3/3.0	0-0	.000	0-0	.000	0-0	.000	0	0	0	0.0	0	0	0	1	0	0

- » Born February 7, 2001 in Albuquerque, N.M.
- » Daughter of Tom and Carla Wade; family owns Bridle Bit Ranch in Marana, Ariz.
- » Father played football at Penn State (1998-91) and New Mexico State (1991-93)
- » Has two siblings, Brittany and Bryce; brother is a junior offensive lineman at UMass
- » Trains with NFL legend Donovan McNabb
- » Played two seasons at Gilbert High under head coach Kyle Pedersen
- » Averaged 9.7 points, 11.3 rebounds, 3.1 blocks, 2.5 assists and 2.2 steals per game in 61 games for the Tigers
- » Posted 11.3 points and 10.5 rebounds per as a senior
- » 2019 McDonald's All-American Game nominee
- » Led GHS to the 2019 Arizona State 5A Championship game

**COACH ADAIR SAYS:**

- » Possesses tireless work ethic
- » Brings physicality and rigor to the game
- » Ability to rebound, run and finish in transition
- » True competitor

SEASON/CAREER HIGHS

Season	Career
Points:	
FG:	
FGA:	
3FG:	
3FGA:	
FT:	
FTA:	
Reb.:	
Assists:	
Blocks:	
Steals:	
Min.:	3 vs. Maine, 11/8

# #4 PARIS MCBRIDE

Sophomore | Guard | 5-4 | Organizational and Community Leadership  
Woodbridge, Va. | Woodbridge | Team Takeover EYBL



## CAREER STATISTICS

CAREER STATISTICS																					
			Total		3-Point		F-Throws		Rebounds											Scoring	
Season	gp-gs	min/avg	fg-fga	pct	fg-fga	pct	ft-fga	pct	off	def	tot	avg	pf	fo	ast	to	blk	stl	pts	avg	
2018-19	31-5	676/21.8	47-171	.275	4-37	.108	45-70	.643	14	42	56	1.8	69	2	88	71	1	34	143	4.6	
2019-20	1-0	23/23.0	2-6	.333	1-3	.333	1-1	1.000	1	2	3	3.0	3	0	1	3	0	0	6	6.0	
TOTAL	32-5	699/21.8	49-177	.277	5-40	.125	46-71	.648	15	44	59	1.8	72	2	89	74	1	34	149	4.7	

- » Born October 22, 1999 in Fairfax, Va.
- » Daughter of Denise Miles and James McBride
- » Has three siblings, Brittney, Alexis and Kennede
- » Led Woodbridge HS to an overall record of 85-24 under head coach Tamika Dudley
- » Finished career with 1,085 points
- » 2018 Conference Player of the Year
- » First Team All-Region; Two-time First Team All-State selection; Three-time First Team All-Conference selection; Second Team All-Met
- » Helped guide the Vikings to the conference and regional championship as a senior; regional championship MVP
- » Will face former AAU teammates Kayla Liles (Elon) this season

## SEASON/CAREER HIGHS

Season	Career
Points: 6 vs. Maine, 11/8	14 vs. Northeastern, 2/16/19
FG: 2 vs. Maine, 11/8	5 vs. Charleston, 1/27/19
FGA: 6 vs. Maine, 11/8	12, 2x, last vs. Towson, 1/6/19
3FG: 1 vs. Maine, 11/8	1, 5x, last vs. Maine, 11/8/19
3FGA: 3 vs. Maine, 11/8	4 at Delaware State, 11/20/18
FT: 1 vs. Maine, 11/8	14 vs. Northeastern, 2/16/19
FTA: 1 vs. Maine, 11/8	16 vs. Northeastern, 2/16/19
Reb.: 3 vs. Maine, 11/8	4, 2x, last vs. Northeastern, 2/16/19
Assists: 1 vs. Maine, 11/8	7 at Delaware State, 11/20/18
Blocks:	1 at Towson, 3/7/19
Steals:	3, 2x, last at W&M, 2/1/19
Min: 23 vs. Maine, 11/8	35 vs. Nicholls, 11/17/18

## COACH ADAIR SAYS:

- » Feisty, competitive nature
- » Great court vision
- » Ability to change speeds and get to rim will create scoring options
- » Relentless on-ball defender

# #5 AGNES PAUL

Freshman | Forward | 6-1 | Nursing  
Bowie, Md. | New Hope Academy | Team Durant



## CAREER STATISTICS

CAREER STATISTICS																					
			Total		3-Point		F-Throws		Rebounds											Scoring	
Season	gp-gs	min/avg	fg-fga	pct	fg-fga	pct	ft-fga	pct	off	def	tot	avg	pf	fo	ast	to	blk	stl	pts	avg	
2019-20	1-0	6/6.0	0-1	.000	0-0	.000	1-2	.500	0	1	1	1.0	1	0	0	0	0	0	1	1.0	
TOTAL	1-0	6/6.0	0-1	.000	0-0	.000	1-2	.500	0	1	1	1.0	1	0	0	0	0	0	1	1.0	

- » Born May 5, 2000 in Nigeria
- » Daughter of Ene Pauline Egbe
- » Member of the Nigerian 17U National Team
- » Played for New Hope Academy and head coach Sam Caldwell
- » Team captain that helped lead NHA to a 38-3 overall record while claiming the GEICO High School Nationals title in 2018-19; Lady Tigers closed her senior year with a 24-game winning streak
- » Lists favorite sports teams as the Los Angeles Lakers, Washington Mystics and Manchester United
- » Enjoys watching movies, styling hair and swimming

## SEASON/CAREER HIGHS

Season	Career
Points: 1 vs. Maine, 11/8	
FG:	
FGA: 1 vs. Maine, 11/8	
3FG:	
3FGA:	
FT: 1 vs. Maine, 11/8	
FTA: 2 vs. Maine, 11/8	
Reb.: 1 vs. Maine, 11/8	
Assists:	
Blocks:	
Steals:	
Min.: 6 vs. Maine, 11/8	

## COACH ADAIR SAYS:

- » Brings an inside presence and championship mentality to the team
- » Ability to dominate inside
- » Has knack for rebounding
- » Flat out tough

# #10 TEE JOHNSON

Junior | Guard | 5-5 | Sociology  
Ocala, Fla. | West Port | Tallahassee CC/Florida



## CAREER STATISTICS

CAREER STATISTICS																					
Season	gp-gs	min/avg	Total		3-Point		F-Throws		Rebounds				Other							Scoring	
			fg-fga	pct	fg-fga	pct	ft-fa	pct	off	def	tot	avg	pf	fo	ast	to	blk	stl	pts	avg	
2019-20	1-0	26/26.0	2-6	.333	0-0	.000	2-4	.500	0	1	1	1.0	2	0	0	0	0	0	2	6	6.0
TOTAL	1-0	26/26.0	2-6	.333	0-0	.000	2-4	.500	0	1	1	1.0	2	0	0	0	0	0	2	6	6.0

- » Born August 25, 1998 in Gainesville, Fla.
- » Daughter of Tiffany Hudson; has four siblings, Tanyia and Tony
- » Transferred to the University of Delaware from Tallahassee Community College in the summer of 2019; previously played at the University of Florida
- » Earned Associate's of Arts degree from TCC in spring 2019
- » Played in 30 games with eight starts in first season at TCC; averaged 7.3 points, 2.2 assists and 2.2 rebounds per game for the Eagles
- » Helped lead team to its second straight season with 25 wins
- » Appeared in 27 games with one start during rookie campaign (2017-18) at Florida

## SEASON/CAREER HIGHS

Season	Career (at Delaware)
Points: 6 vs. Maine, 11/8	
FG: 2 vs. Maine, 11/8	
FGA: 6 vs. Maine, 11/8	
3FG:	
3FGA:	
FT: 2 vs. Maine, 11/8	
FTA: 4 vs. Maine, 11/8	
Reb.: 1 vs. Maine, 11/8	
Assists:	
Blocks:	
Steals: 2 vs. Maine, 11/8	
Min: 26 vs. Maine, 11/8	

## COACH ADAIR SAYS:

- » Absolutely relentless defender
- » Lock down defender
- » Prides herself on the heart and hustle plays in order to get the win
- » Speed and quickness will help create the pace of play



## #12 LIZZIE OLEARY

Junior | Forward | 6-2 | Fashion Merchandising  
Willow Grove, Pa. | Abington Senior | Philadelphia Comets

## COACH ADAIR SAYS:

- » Very high basketball IQ; basketball savvy
- » Glue player that is fundamentally sound
- » Can score inside and out
- » Blue collar; does all the little things well

## CAREER STATISTICS

Season	gp-gs	min/avg	Total		3-Point		F-Throws		Rebounds				Scoring			
			fg-fga	pct	fg-fga	pct	ft-fa	pct	off	def	tot	avg	pts	avg	pts	avg
2017-18	32-0	499/15.6	50-103	.485	1-4	.250	29-40	.725	31	58	89	2.8	56	1	18	33
2018-19	31-14	415/13.4	37-92	.402	0-0	.000	22-37	.595	44	56	100	3.2	72	2	22	45
2019-20	1-0	10/10.0	1-1	1.000	0-0	.000	0-0	.000	0	1	1	1.0	3	0	0	1
TOTAL	64-14	924/14.4	88-196	.449	1-4	.250	51-77	.662	75	115	190	3.0	131	3	40	79

- » Born October 14, 1998 in Agana Heights, Guam
- » Daughter of Tim and Martha Oleary; oldest of three siblings
- » Led Abington HS to three 20-win seasons and two district title games, including the 2017 District One 6A title under head coach Dan Marsh
- » Surpassed the 1,000-point mark and averaged 13.9 points, 10.2 rebounds, 2.6 assists and 2.5 blocks per game as a senior
- » 2017 All-Intelligencer Girls Basketball Player of the Year and Sports Writers Pennsylvania All-State Second Team; Three-time First Team All-League; Two-time team captain
- » Previously played the 2013-14 season at Archbishop Wood, where she led the team to the District 12 Championship and Philadelphia Catholic League and Pennsylvania State Finals
- » 2017-18 CAA All-Rookie Team; Team Sixth Woman of the Year

## SEASON/CAREER HIGHS

Season	Career
Points: 2 vs. Maine, 11/8	13 at Elon, 1/21/18
FG: 1 vs. Maine, 11/8	6 at Elon, 1/21/18
FGA: 1 vs. Maine, 11/8	9, 2x, last at JMU, 3/9/19
3FG: 1 at Elon, 1/21/18	1 at Elon, 1/21/18
3FGA: 2 vs. Towson, 2/14/18	2 vs. Towson, 2/14/18
FT: 4, 2x, last vs. Drexel, 3/1/18	4, 2x, last vs. Drexel, 3/1/18
FTA: 4, 6x, last at Georgetown, 3/16/18	4, 6x, last at Georgetown, 3/16/18
Reb.: 1 vs. Maine, 11/8	11 vs. Hofstra, 2/17/19
Assists: 3 vs. Elon, 3/1/19	3 vs. Elon, 3/1/19
Blocks: 2, 2x, last vs. Towson, 3/14/19	2, 2x, last vs. Towson, 3/14/19
Steals: 3 vs. William & Mary, 2/9/18	3 vs. William & Mary, 2/9/18
Min: 10 vs. Maine, 11/8	28 at UNCW, 2/24/19

## #20 JASMINE DICKEY

Sophomore | Guard/Forward | 5-10 | Sports Health  
Baltimore, Md. | Catonsville | MD Lady Tigers

## COACH ADAIR SAYS:

- » A true warrior
- » Brings a next level of competitiveness
- » Ability to rebound and run helps create high-paced tempo
- » Lock-down defender
- » Star in the making
- » Relentless

## CAREER STATISTICS

Season	gp-gs	min/avg	Total		3-Point		F-Throws		Rebounds				Scoring			
			fg-fga	pct	fg-fga	pct	ft-fa	pct	off	def	tot	avg	pts	avg	pts	avg
2018-19	23-14	592/25.7	69-203	.340	0-1	.000	44-73	.603	67	124	191	8.3	69	3	18	51
2019-20	1-1	32/32.0	7-17	.412	0-0	.000	2-2	1.000	5	8	13	13.0	4	0	2	3
TOTAL	24-15	624/26.0	76-220	.345	0-1	.000	46-75	.613	72	132	204	8.5	73	3	20	54

- » Born February 23, 2000 in Baltimore, Md.; daughter of Nikisha and Brian Dickey; two younger siblings, Brian and Ashley
- » Led Catonsville HS to an overall record of 93-14 under head coach Mike Mohler
- » Guided the Comets to the 2017 Maryland Class 4A State Championship title and the 2018 Maryland Class 4A State Championship game
- » All-time leading scorer in Baltimore County with 2,091 career points
- » Two-time Maryland Ms. Basketball (2017, 2018); 2018 Baltimore Sun All-Metro Player of the Year; Catonsville Times Female Athlete of the Year
- » Averaged 20.1 points, 10.8 rebounds, 4.4 steals, 3.8 assists and 1.3 blocks per contest as a senior; posted 72.0 free throw percentage
- » First UD freshman to post 20-plus points in her collegiate debut since Anette Percy registered 21 points in 1994 and is believed to be the first Blue Hen to record 20-plus points and 10-plus rebounds in her first-ever game at Delaware
- » Missed part of 2018-19 with a broken hand
- » 2019 CAA All-Rookie Team; five-time CAA Rookie of the Week (Nov. 12, Nov. 19, Nov. 26, Dec. 31, Jan. 21)
- » 2018-19 Team Sixth Woman of the Year; Team Chairwoman of the Boards

## SEASON/CAREER HIGHS

Season	Career
Points: 16 vs. Maine, 11/8	21 at Northern Iowa, 11/9/18
FG: 7 vs. Maine, 11/8	8 at Northern Iowa, 11/9/18
FGA: 17 vs. Maine, 11/8	21 at Northern Iowa, 11/9/18
3FG: 1 at Northern Iowa, 11/9/18	1 at Northern Iowa, 11/9/18
3FGA: 7 vs. Charleston, 1/27/18	7 vs. Charleston, 1/27/18
FT: 2 vs. Maine, 11/8	8, 2x, last vs. Charleston, 1/27/19
FTA: 2 vs. Maine, 11/8	18 vs. Bradley, 11/23/18
Reb.: 13 vs. Maine, 11/8	2, 5x, last vs. Maine, 11/8/19
Assists: 2 vs. Maine, 11/8	3, 2x, last vs. Towson, 3/14/19
Blocks: 4 vs. Maine, 11/8	4 vs. Maine, 11/8/19
Steals: 32	36 vs. Bradley, 11/23/18

## #21 CHYNA LATIMER

Junior | Guard/Forward | 6-0 | Criminal Justice and Political Science  
Edgewood, Md. | Patterson Mill | George Washington | Maryland Lady Terps AAU

## COACH ADAIR SAYS:

- » Toughness, versatility and ability to score is what excites me
- » Brings size and athleticism on the perimeter
- » Tough to guard, which will make us better during practice

## CAREER STATISTICS

- » Born March 22, 1999 in Hilton Head, S.C.
- » Daughter of Chasity Tatum and Mario Tatum; has four siblings, Mychal, Christopher, Jaylen and Mario Jr.
- » Lists favorite sports teams as the Washington Mystics, Baltimore Ravens and Seattle Seahawks
- » Transferred to the University of Delaware from George Washington University in the summer of 2019; will sit out the 2019-20 campaign due to NCAA transfer regulations
- » Led Patterson Mill to an overall record of 84-16 (.840) with three MPSSAA Class 2A State Championship titles over four years under head coach Holly Ismail

## SEASON/CAREER HIGHS

Season	Career (at Delaware)
Points:	
FG:	
FGA:	
3FG:	
3FGA:	
FT:	
FTA:	
Reb.:	
Assists:	
Blocks:	
Steals:	
Min:	

## #22 SAMONE DeFREESE

Senior | Forward | 6-0 | Pre-Vet Medicine and Animal Biology  
Bergenfield, N.J. | Berkshire (Mass.) | New York Gauchos

## COACH ADAIR SAYS:

- » Athletic slasher who can score inside and out
- » Aggressive and assertive on the court
- » Has really taken big steps in improving in her four years
- » Senior leader

## CAREER STATISTICS

Season	gp-gs		min/avg		Total fg-fga		pct		3-Point fg-fga		pct	F-Throws ft-fa		pct		Rebounds off def tot avg				pf fo		ast to		blk stl		Scoring pts avg	
2016-17	12-0		24/2.0		0-8		.000		0-2		.000	2-2		1.000		1	2	3	0.3	5	0	0	1	0	0	2	0.2
2017-18	32-27		975/30.5		143-322		.444		10-55		.182	66-110		.600		83	153	236	7.4	80	2	60	78	8	40	362	11.3
2018-19	29-23		783/27.0		118-292		.404		4-16		.250	77-105		.733		65	124	189	6.5	77	4	54	56	3	32	317	10.9
2019-20	1-1		15/15.0		1-6		.167		1-2		.500	1-2		.500		0	1	1	1.0	2	0	2	1	0	0	4	4.0
TOTAL	74-51		1797/24.3		262-628		.417		15-75		.200	146-219		.667		149	280	429	5.8	164	6	116	136	11	72	685	9.3

- » Born February 27, 1997 in Englewood, N.J.
- » Daughter of Freda Boecherer; older sister, Samantha, was a 1,000-point scorer and two-time All-CAA selection at Northeastern (2012-16)
- » Averaged 17.3 points, 8.6 rebounds, 2.4 assists, 2.2 steals and 1.0 blocks per game in four seasons at Berkshire School in Sheffield, Mass.
- » Earned The Robert A. Powers Award, which recognizes a Berkshire senior who has demonstrated personal growth, loyalty to the school and dependability of performance which has distinguished her career; Also awarded The Herger Trophy, which is awarded to a senior female student who has best exemplified proficiency and sportsmanship in interscholastic athletics
- » 2018 CAA All-Tournament Team; Arthur Ashe Jr. Sports Scholar
- » 2018-19 Preseason All-CAA; 2018-19 All-CAA Second Team
- » 2019-20 Preseason All-CAA

## SEASON/CAREER HIGHS

Season	Career
Points: 4 vs. Maine, 11/8	31 vs. Northeastern, 2/16/19
FG: 1 vs. Maine, 11/8	14 vs. Northeastern, 2/16/19
FGA: 6 vs. Maine, 11/8	24 vs. Northeastern, 2/16/19
3FG: 1 vs. Maine, 11/8	2, 2x, last vs. UNCW, 1/28/18
3FGA: 2 vs. Maine, 11/8	7 vs. Boston Univ., 11/19/17
FT: 1 vs. Maine, 11/8	8 at Charleston, 2/22/19
FTA: 2 vs. Maine, 11/8	10 at Charleston, 2/22/19
Reb.: 1 vs. Maine, 11/8	14 at Elon, 1/21/18
Assists: 2 vs. Maine, 11/8	7 vs. Boston Univ., 11/19/17
Blocks:	2 at William & Mary, 2/23
Steals:	4, 2x, last vs. William & Mary, 3/3/19
Min.: 15 vs. Maine, 11/8	45 at Drexel, 3/9/18

## #23 BAILEY KARGO

Senior | Guard | 5-10 | Neuroscience  
Greensboro, N.C. | Walter Hines Page | Winston-Salem Stealers

## COACH ADAIR SAYS:

- » Perimeter threat
- » Tireless and committed worker that holds a high basketball IQ
- » Will bring leadership to the sidelines this season

## CAREER STATISTICS

Season	gp-gs		min/avg		Total fg-fga		pct		3-Point fg-fga		pct	F-Throws ft-fa		pct		Rebounds off def tot avg				pf fo		ast to		blk stl		Scoring pts avg	
2016-17	30-8		408/13.6		24-85		.282		12-48		.250	8-12		.667		3	20	23	0.8	27	1	18	32	0	10	68	2.3
2017-18	32-32		914/28.6		85-244		.348		56-145		.386	34-39		.872		7	19	26	0.8	64	3	51	48	4	26	260	8.1
2018-19	29-18		583/20.1		72-183		.393		33-89		.371	7-11		.636		5	20	25	0.9	36	0	30	42	3	18	184	6.3
TOTAL	91-58		1905/20.9		181-512		.354		101-282		.358	49-62		.790		15	59	74	0.8	127	4	99	122	7	54	512	5.6

- » Born October 31, 1997 in Johnstown, Pa.
- » Daughter of Ray and Kathy Kargo; both are physical therapists; father played basketball at Lebanon Valley (1988-91)
- » Has two younger siblings, Campbell and Reagan
- » Three-time All-Conference pick out of Walter Hines Page HS; second female in school history to register 1,000 career points in just three seasons; 2016 All-Metro 4A Conference Player of the Year; averaged 18.6 points, 3.6 rebounds, 2.0 assists and 1.9 steals as a senior
- » Aspirations of becoming an optometrist
- » Ninth in program history with 101 career 3-point field goals made
- » Also fifth all-time with a 35.8 3-point field goal percentage and 10<sup>th</sup> with 282 3-point field goal attempts
- » Will miss 2019-20 season due to an ACL injury

## SEASON/CAREER HIGHS

Season	Career
Points:	21 vs. Elon, 1/5/18
FG:	8 vs. Gardner-Webb, 12/18/18
FGA:	14 at Northeastern, 1/20/19
3FG:	5 vs. Elon, 1/5/18
3FGA:	10 at Northeastern, 1/20/19
FT:	4, 2x, last vs. EU, 11/26/17
FTA:	4, 3x, last vs. EU, 2/26/17
Reb.:	5, 2x, last vs. Northeastern, 3/8/18
Assists:	4, 3x, last at Charleston, 2/22/19
Blocks:	1, 7x, last at Elon, 2/3
Steals:	3, 2x, last at Charleston, 2/22/19
Min.:	46 vs. Saint Peter's, 11/25

## #25 REBECCA LAWRENCE

Senior | Forward | 6-3 | Exercise Science  
Ridgefield, Conn. | Ridgefield | Connecticut Basketball Club

## COACH ADAIR SAYS:

- » Versatile player with a high-major skill set
- » Can stretch the defense with her ability to shoot the 3, but also skilled with back to basket
- » Physical presence

## CAREER STATISTICS

Season	gp-gs		min/avg		Total fg-fga		pct		3-Point fg-fga		pct	F-Throws ft-fa		pct		Rebounds off def tot avg				pf fo		ast to		blk stl		Scoring pts avg	
2016-17	21-0		127/6.0		7-22		.318		1-2		.500	2-2		1.000		3	6	9	0.4	8	0	3	5	4	1	17	0.8
2017-18	32-29		729/22.8		73-195		.374		3-35		.086	10-12		.833		29	94	123	3.8	50	1	21	24	51	8	159	5.0
2018-19	30-25		667/22.2		81-183		.443		5-28		.179	7-10		.700		51	78	129	4.3	53	2	12	28	51	13	174	5.8
2019-20	1-1		21/21.0		2-5		.400		1-1		1.000	0-0		.000		2	2	4	4.0	3	0	0	1	1	0	5	5.0
TOTAL	84-55		1544/18.4		163-405		.402		10-66		.152	19-24		.792		85	180	265	3.2	114	3	36	58	107	22	355	4.2

- » Born February 17, 1998
- » Daughter of Judith and Gary Lawrence
- » Has one older brother, Robert
- » Dual citizen in the United States and Britain
- » Two-time CHSCA First Team All-State selection from Ridgefield High School; helped guide the Tigers to the FCIAC Championship and a CIAC state finals appearance as a junior
- » Four-time All-FCIAC honoree; 2015-16 FCIAC Scholar Athlete
- » 3x CAA Academic Honor Roll
- » 2017-18 Team Most Improved Player
- » 2018-19 Team Iron Blue Hen Award
- » 10<sup>th</sup> in Delaware career record books with 107 blocked shots; 30 career multi-block games

## SEASON/CAREER HIGHS

Season	Career
Points:	19 at UNCW, 2/24/19
FG:	2 vs. Maine, 11/8
FGA:	5 vs. Maine, 11/8
3FG:	1 vs. Maine, 11/8
3FGA:	1 vs. Maine, 11/8
FT:	2 vs. Maine, 11/8
FTA:	2 vs. Maine, 11/8
Reb.:	4 vs. Maine, 11/8
Assists:	3, 2x, last at UNCW, 2/24/19
Blocks:	5, 2x, last vs. Gardner-Webb, 12/18/18
Steals:	2, 4x, last vs. Charleston, 1/27/19
Min.:	21 vs. Maine, 11/8

# #30 KAYLA SHAW

Redshirt Junior | Guard | 5-10 | Communications  
Scottsdale, Ariz. | Chaparral | Monmouth



## CAREER STATISTICS

Season	gp-gs	min/avg	Total fg-fga	pct	3-Point fg-fga	pct	F-Throws ft-fa	pct	Rebounds off def tot	avg	pf	fo	ast	to	blk	stl	Scoring pts	avg
2019-20	1-1	29/29.0	4-8	.500	2-5	.400	1-1	1.000	0	1	1	1.0	1	0	0	2	11	11.0
TOTAL	1-1	29/29.0	4-8	.500	2-5	.400	1-1	1.000	0	1	1	1.0	1	0	0	2	11	11.0

- » Born December 16, 1997 in Phoenix, Ariz.
- » Daughter of Lisa and Larry Shaw
- » Has two older brothers, Brian and Jeff, and a twin brother, Dillon
- » Scored more than 1,200 points for Chaparral High School
- » Led the Firebirds three times to the Sweet 16 of the Arizona State Playoffs, while also guiding CHS to the Elite 8 as a sophomore
- » 2015-16 Sectional Player of the Year; also earned All-Second First Team and All-Division First Team honors
- » Two-time All-State Honorable Mention, All-Division I Section II First and Second Team and two-time All-City performer
- » Transferred to Delaware from Monmouth following sophomore season (2017-18); will be eligible for competition beginning in 2019-20
- » MAAC All-Rookie Team; shattered program record with 93 3-pointers as a freshman
- » Averaged 11.1 points, 1.7 rebounds, 0.9 steals, 0.9 assists for Hawks

## SEASON/CAREER HIGHS

Season	Career (at Delaware)
Points:	11 vs. Maine, 11/8
FG:	4 vs. Maine, 11/8
FGA:	8 vs. Maine, 11/8
3FG:	2 vs. Maine, 11/8
3FGA:	5 vs. Maine, 11/8
FT:	1 vs. Maine, 11/8
FTA:	1 vs. Maine, 11/8
Reb.:	1 vs. Maine, 11/8
Assists:	
Blocks:	
Steals:	
Min:	29 vs. Maine, 11/8

## COACH ADAIR SAYS:

- » Pure shooter with deep range
- » Crafty John Stockton
- » Fierce competitor that just finds a way to win
- » Will be a major scoring option

# #32 TY BATTLE

Junior | Forward | 6-0 | Business Marketing  
Plainfield, Ill. | Oswego East | Indiana State



## CAREER STATISTICS

- » Born March 20, 1999 in Denver, Colo.
- » Daughter of Kenny and Tiffany Battle
- » Father played collegiate basketball at Northern Illinois (1984-86) and Illinois (1987-89); regarded as one of the most decorated players in Illinois history and helped lead the Fightin' Illini to the 1989 Final Four; drafted by the Detroit Pistons in the First Round (27th overall) of the 1989 NBA Draft and was subsequently traded to the Phoenix Suns; played four seasons with the Suns, Denver Nuggets, Boston Celtics and Golden State Warriors
- » Has five siblings, Kenny Jr., Kyndell, Kamron, Keion and Kacey
- » Transferred to the University of Delaware from Indiana State University in the summer of 2019; will sit out the 2019-20 campaign due to NCAA transfer regulations

## SEASON/CAREER HIGHS

Season	Career (at Delaware)
Points:	
FG:	
FGA:	
3FG:	
3FGA:	
FT:	
FTA:	
Reb.:	
Assists:	
Blocks:	
Steals:	
Min:	

## COACH ADAIR SAYS:

- » Basketball is in her blood
- » Prides herself on her work ethic
- » Relentless on the boards
- » Tough opponent to guard
- » Solid all-around player

# #33 NICOLE ENABOSI

Graduate Student | Forward | 6-0 | International Business  
Gaithersburg, Md. | Our Lady of Good Counsel



## CAREER STATISTICS

Season 2015-16																	Scoring				
Season	gp-gs		min/avg	Total		3-Point		F-Throws		Rebounds				pf	fo	ast	to	blk	stl	pts	avg
				fg-fga	pct	fg-fga	pct	ft-fa	pct	off	def	tot	avg								
2015-16	31-16	798/25.7		91-200	.455	0-0	.000	93-153	.608	69	151	220	7.1	82	1	21	78	33	39	275	8.9
2016-17	29-29	939/32.4		121-267	.453	1-2	.500	154-212	.726	88	201	289	10.0	81	2	67	90	26	53	397	13.7
2017-18	32-32	1112/34.8		202-398	.508	2-3	.667	171-242	.707	92	286	378	11.8	108	4	72	100	61	64	577	18.0
TOTAL	92-77	2849/31.0		414-865	.479	3-5	.600	418-607	.689	249	638	887	9.6	271	7	160	268	120	156	1249	13.6

- » Born March 26, 1997
- » Daughter of Ora Enabosi; is an only child
- » Within the Top 10 of eight career categories; double doubles (third; 44), rebounds per game (fourth; 9.6), FG% (fifth; .479), FTA (fifth; 607), blocked shots (sixth; 120), FT made (sixth; 418), rebounds (seventh; 887), points per game (seventh; 13.6)
- » Set school single-season record with 378 rebounds and 23 double doubles in 2017-18
- » Registered fifth (and first since 1989) 20-20 game in school history with 23 points and 20 rebounds against Loyola (Dec. 22)
- » 2017-18 CAA Player of the Year; CAA All-Defensive Team; UD Outstanding Female Athlete of the Year
- » Trained with the Nigerian National Team in July 2018
- » Missed 2018-19 season following ACL surgery
- » 2019-20 Preseason All-CAA

## SEASON/CAREER HIGHS

Season	Career
Points:	27 vs. Saint Peter's, 11/25/17
FG:	12 vs. Saint Peter's, 11/25/17
FGA:	20 at James Madison, 2/25/18
3FG:	1, 3x, last at Towson, 3/3/18
3FGA:	3 at Hartford, 11/13/17
FT:	13 vs. East Carolina, 11/22/15
FTA:	18 at Hofstra, 1/19/17
Reb.:	20 vs. Loyola, 12/22/17
Assists:	6, 2x, last at Hartford, 11/13/17
Blocks:	7 at Georgetown, 12/10/15
Steals:	5, 2x, last vs. Hofstra, 2/11/18
Min.:	48 vs. Saint Peter's, 11/25/17

## COACH ADAIR SAYS:

- » Brings experience, leadership and toughness to the team
- » Winner and veteran leader
- » Ability to change the game
- » Difference maker

1 Maine 69, Delaware 56

Friday, November 8, 2019 | Bob Carpenter Center | Newark, Del.

Maine 69 • 1-0

#	Player	Total		3-Ptr		Rebounds			PF	TP	A	TO	Blk	Stl	Min
		FG-FGA	FG-FGA	FT-FTA	Off	Def	Tot								
05	Maeve Carroll	f	3-5	0-0	3-4	2	5	7	4	9	2	3	1	1	27
03	Anne Simon	g	4-8	2-3	2-2	0	5	5	4	12	1	0	0	5	35
04	Maddy McVicar	g	0-3	0-2	0-0	0	7	7	2	0	3	1	0	2	25
15	Dor Saar	g	2-9	0-2	2-2	0	0	0	3	6	4	4	0	1	38
22	Blanca Millan	g	11-19	2-6	13-15	1	3	4	3	37	1	2	1	2	36
10	Anna Kahelin		1-1	0-0	0-0	0	1	1	3	2	0	2	0	1	12
20	Kelly Fogarty		1-3	1-3	0-0	0	0	0	0	3	0	1	0	0	14
32	Kira Barra		0-0	0-0	0-0	0	2	2	1	0	1	1	0	0	13
Team						0	5	5							
Totals			22-48	5-16	20-23	3	28	31	20	69	12	14	2	12	200

1st - FG %:	5-15	33.3%	2nd: 6-11	54.5%	3rd: 7-13	53.8%	4th: 4-9	44.4%	Game: 22-48	45.8%	Deadball
3FG %:	2-7	28.6%	1-4	25.0%	0-1	0.0%	2-4	50.0%	5-16	31.3%	Rebounds
FT %:	2-2	100.0%	9-10	90.0%	1-2	50.0%	8-9	88.9%	20-23	87.0%	1

Delaware 56 • 0-1

#	Player	Total		3-Ptr		Rebounds			PF	TP	A	TO	Blk	Stl	Min
		FG-FGA	FG-FGA	FT-FTA	Off	Def	Tot								
22	DeFreese, Samone	f	1-6	1-2	1-2	0	1	1	2	4	2	1	0	0	15
25	Lawrence, Rebecca	f	2-5	1-1	0-0	2	2	4	3	5	0	1	1	0	21
02	Gonzales, Abby	g	2-7	1-5	0-0	0	6	6	1	5	1	6	0	1	35
20	Dickey, Jasmine	g	7-17	0-0	2-2	5	8	13	4	16	2	3	0	4	32
30	Shaw, Kayla	g	4-8	2-5	1-1	0	1	1	1	11	0	2	0	0	29
03	Wade, Brynn		0-0	0-0	0-0	0	0	0	0	0	0	1	0	0	3
04	McBride, Paris		2-6	1-3	1-1	1	2	3	3	6	1	3	0	0	23
05	Paul, Agnes		0-1	0-0	1-2	0	1	1	1	1	0	0	0	0	6
10	Johnson, Tee		2-6	0-0	2-4	0	1	1	2	6	0	0	0	2	26
12	Oleary, Lizzie		1-1	0-0	0-0	0	1	1	3	2	0	1	0	0	10
Team						4	2	6							
Totals			21-57	6-16	8-12	12	25	37	20	56	6	18	1	7	200

1st - FG %:	7-18	38.9%	2nd: 3-6	50.0%	3rd: 5-14	35.7%	4th: 6-19	31.6%	Game: 21-57	36.8%	Deadball
3FG %:	3-7	42.9%	2-3	66.7%	0-1	0.0%	1-5	20.0%	6-16	37.5%	Rebounds
FT %:	1-1	100.0%	4-6	66.7%	0-0	0.0%	3-5	60.0%	8-12	66.7%	0

Officials: Angel Stanton, Jeffrey Smith, Fatou Cissoko-Stephens  
Technical fouls: Maine-None. Delaware-None.

Attendance: 858

Score by periods		1st	2nd	3rd	4th	Total						
Maine		14	22	15	18	69	Points	In	Off	2nd	Fast	
Delaware		18	12	10	16	56	Paint	Paint	T/O	Chance	Break	Bench
							MAINE	34	17	5	6	5
							DELAWARE	26	12	9	7	15

Last FG - MAINE 4th-01:09, DELAWARE 4th-00:45.  
Largest lead - MAINE by 16 4th-07:07, DELAWARE by 8 1st-05:41.  
MAINE led for 26:45. DELAWARE led for 12:39. Game was tied for 00:36.

Score tied - 3 times.  
Lead changed - 3 times.

2 Delaware State at Delaware

Tuesday, November 12, 2019 | Bob Carpenter Center | Newark, Del.

4 Delaware at UCF

Sunday, November 24, 2019 | Orlando, Fla. | Addition Financial Arena

3 Delaware at Maryland

Sunday, November 17, 2019 | Xfinity Center | College Park, Md.



**2019-20 Delaware Women's Basketball**  
**Delaware Combined Team Statistics (as of Nov 08, 2019)**  
**All games**

<b>RECORD:</b>	<b>OVERALL</b>	<b>HOME</b>	<b>AWAY</b>	<b>NEUTRAL</b>
ALL GAMES	0-1	0-1	0-0	0-0
CONFERENCE	0-0	0-0	0-0	0-0
NON-CONFERENCE	0-1	0-1	0-0	0-0

##	Player	gp-gs	min	avg	Total		3-Point		F-Throw		Rebounds				pf	dq	a	to	blk	stl	pts	avg
					fg-fga	fg%	3fg-fga	3fg%	ft-fga	ft%	off	def	tot	avg								
20	Dickey, Jasmine	1-1	32	32.0	7-17	.412	0-0	.000	2-2	1.000	5	8	13	13.0	4	0	2	3	0	4	16	16.0
30	Shaw, Kayla	1-1	29	29.0	4-8	.500	2-5	.400	1-1	1.000	0	1	1	1.0	1	0	0	2	0	0	11	11.0
10	Johnson, Tee	1-0	26	26.0	2-6	.333	0-0	.000	2-4	.500	0	1	1	1.0	2	0	0	0	0	2	6	6.0
04	McBride, Paris	1-0	23	23.0	2-6	.333	1-3	.333	1-1	1.000	1	2	3	3.0	3	0	1	3	0	0	6	6.0
02	Gonzales, Abby	1-1	35	35.0	2-7	.286	1-5	.200	0-0	.000	0	6	6	6.0	1	0	1	6	0	1	5	5.0
25	Lawrence, Rebecca	1-1	21	21.0	2-5	.400	1-1	1.000	0-0	.000	2	2	4	4.0	3	0	0	1	1	0	5	5.0
22	DeFreese, Samone	1-1	15	15.0	1-6	.167	1-2	.500	1-2	.500	0	1	1	1.0	2	0	2	1	0	0	4	4.0
12	Oleary, Lizzie	1-0	10	10.0	1-1	1.000	0-0	.000	0-0	.000	0	1	1	1.0	3	0	0	1	0	0	2	2.0
05	Paul, Agnes	1-0	6	6.0	0-1	.000	0-0	.000	1-2	.500	0	1	1	1.0	1	0	0	0	0	0	1	1.0
03	Wade, Brynn	1-0	3	3.0	0-0	.000	0-0	.000	0-0	.000	0	0	0	0.0	0	0	0	1	0	0	0	0.0
Team											4	2	6									
Total.....		1	200		21-57	.368	6-16	.375	8-12	.667	12	25	37	37.0	20	0	6	18	1	7	56	56.0
Opponents.....		1	200		22-48	.458	5-16	.313	20-23	.870	3	28	31	31.0	20	0	12	14	2	12	69	69.0

<b>TEAM STATISTICS</b>	<b>DELAWARE</b>	<b>OPP</b>
SCORING	56	69
Points per game	56.0	69.0
Scoring margin	-13.0	-
FIELD GOALS-ATT	21-57	22-48
Field goal pct	.368	.458
3 POINT FG-ATT	6-16	5-16
3-point FG pct	.375	.313
3-pt FG made per game	6.0	5.0
FREE THROWS-ATT	8-12	20-23
Free throw pct	.667	.870
F-Throws made per game	8.0	20.0
REBOUNDS	37	31
Rebounds per game	37.0	31.0
Rebounding margin	+6.0	-
ASSISTS	6	12
Assists per game	6.0	12.0
TURNOVERS	18	14
Turnovers per game	18.0	14.0
Turnover margin	-4.0	-
Assist/turnover ratio	0.3	0.9
STEALS	7	12
Steals per game	7.0	12.0
BLOCKS	1	2
Blocks per game	1.0	2.0
ATTENDANCE	858	0
Home games-Avg/Game	1-858	0-0
Neutral site-Avg/Game	-	0-0

<b>Date</b>	<b>Opponent</b>	<b>Score</b>	<b>Att.</b>
11/08/19	MAINE	L 56-69	858

\* - Conference game

<b>Score by Periods</b>	<b>1st</b>	<b>2nd</b>	<b>3rd</b>	<b>4th</b>	<b>Totals</b>
Delaware	18	12	10	16	56
Opponents	14	22	15	18	69